



DETROIT METRO ▪ WILLOW RUN  
WAYNE COUNTY AIRPORT AUTHORITY



# Community Advisory Committee

Detroit Metropolitan Wayne County Airport Master Plan Update

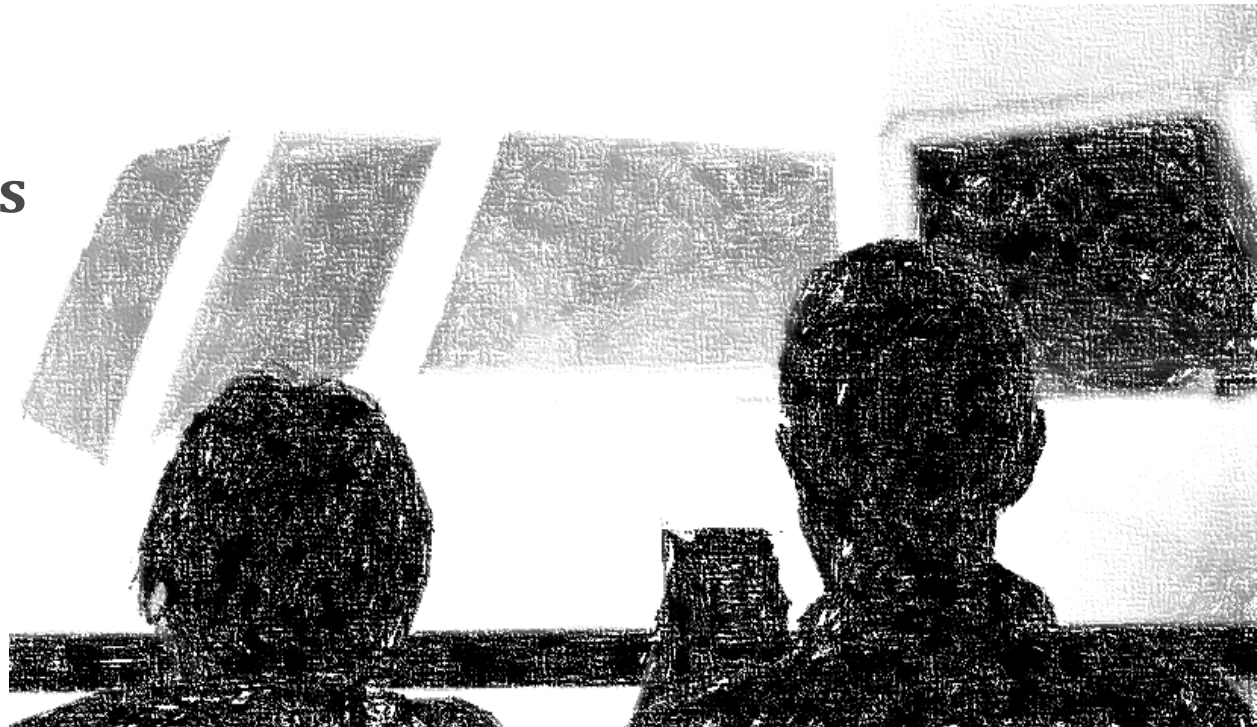
Meeting #1: Project Kick-off

April 6, 2016

**Leigh** | Fisher

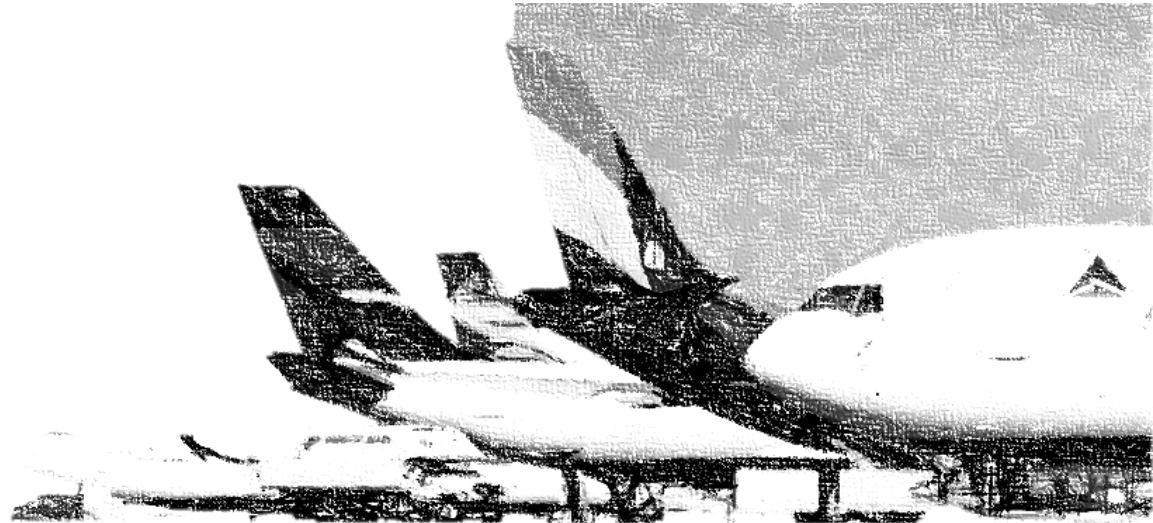
*Today's agenda and discussion topics*

- 1. Introductions**
- 2. What is an Airport Master Plan?**
- 3. Key findings to date**
- 4. Discussion with our stakeholders**
- 5. Next steps**
- 6. Closing remarks**



# *Introductions*

- **Your name**
- **Which organization you represent**
- **What does your organization do ?**
- **What is one thing you'd like to see improved at the Airport**



# *What is an Airport Master Plan?*



# Proposed Airport Roles

## Willow Run

## Detroit Metro

### Role

Reliever Airport

Commercial Service

### Users



On-demand air cargo



General aviation flight training



Corporate and recreational general aviation



Aircraft maintenance



Large hub passenger operations



Integrated logistics carriers

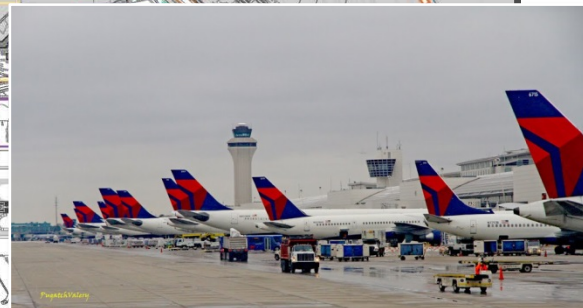
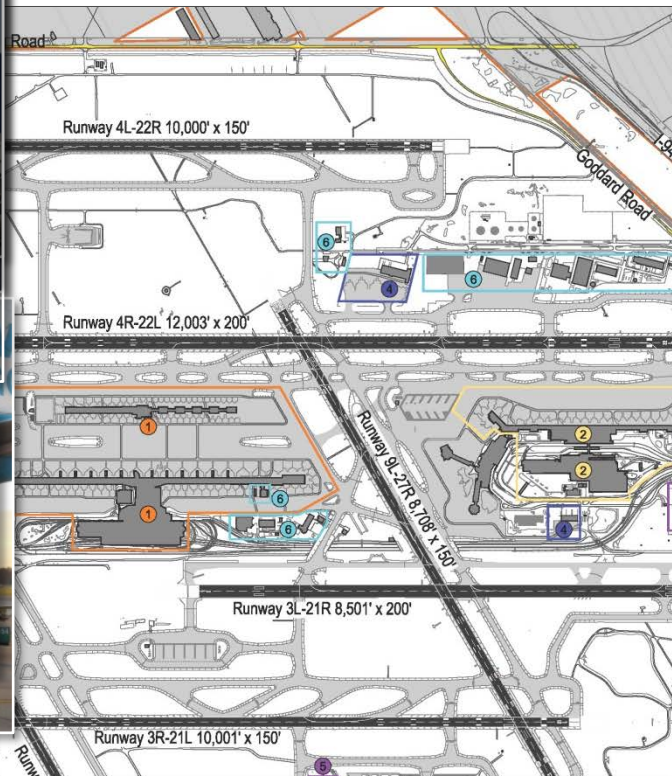


High-end corporate general aviation



Aircraft maintenance

# Detroit Metropolitan Wayne County Airport



- ① McNamara Terminal
- ② North Terminal
- ③ Rental car facilities
- ④ Air cargo facilities
- ⑤ General aviation facilities
- ⑥ Airport / airline support





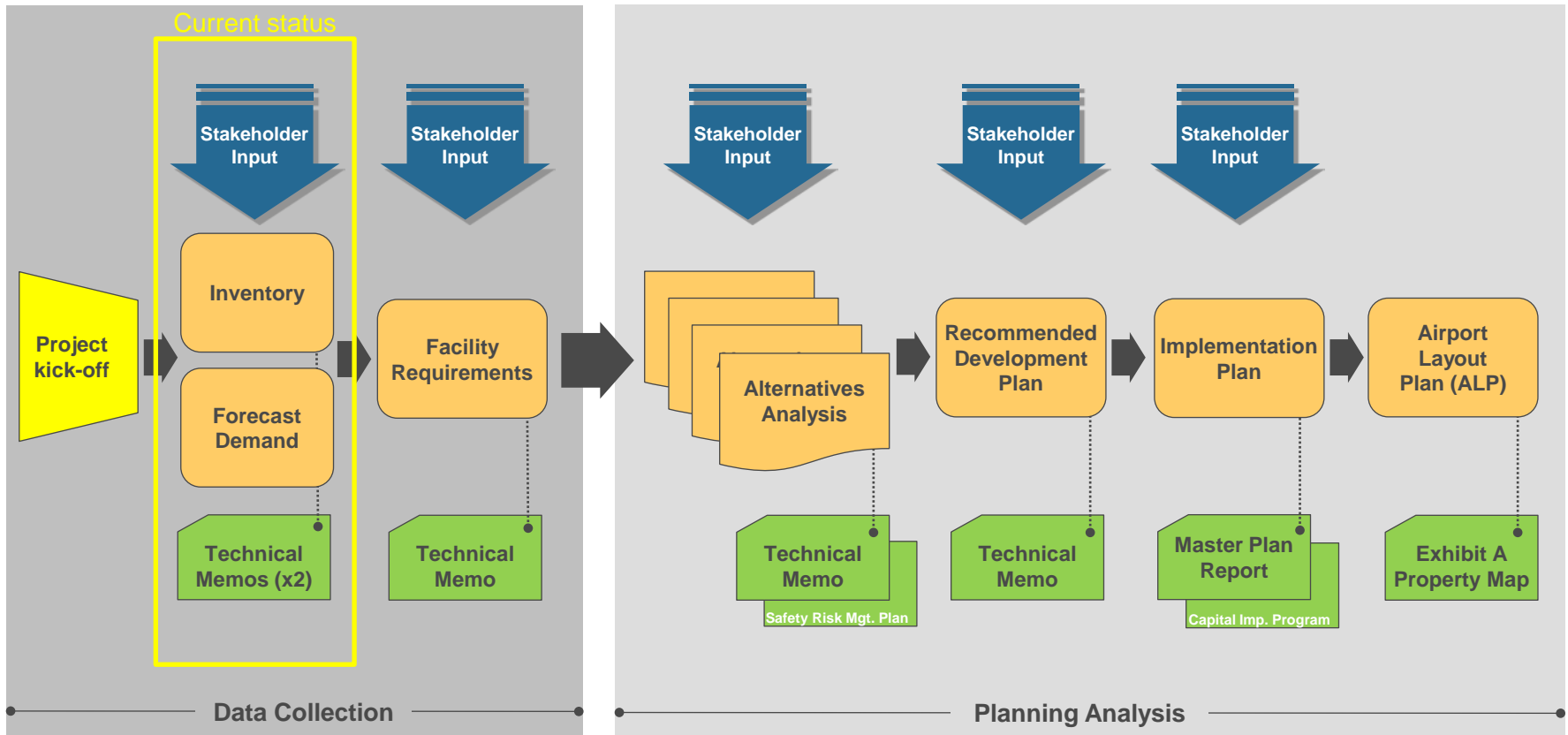
# Airport Master Plan

*A study to identify long range improvement plans for an Airport*



# The Master Planning Process

*The master planning process includes a series of technical analyses and summary documents, as well as opportunities for stakeholder and community input*



# Numerous Factors Influence the Master Plan



# Why Prepare an Airport Master Plan

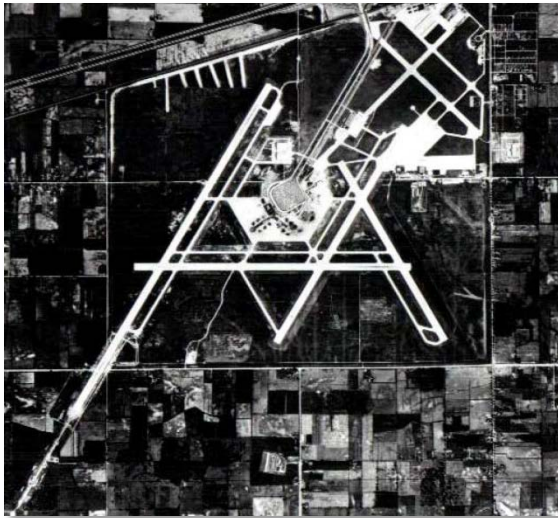
*There are strategic and technical reasons . . .*

- **FAA requirement to regularly update – tied to the Authority’s ability to receive federal funding for Airport development**
- **An organized way to determine:**
  - What facilities will be needed in the future
  - What are the development options
  - How will facilities be implemented (timeline, funding, etc.)
- **Airport Layout Plan – the FAA’s official document of the Airport Authority’s plans**

# Prior Airport Development

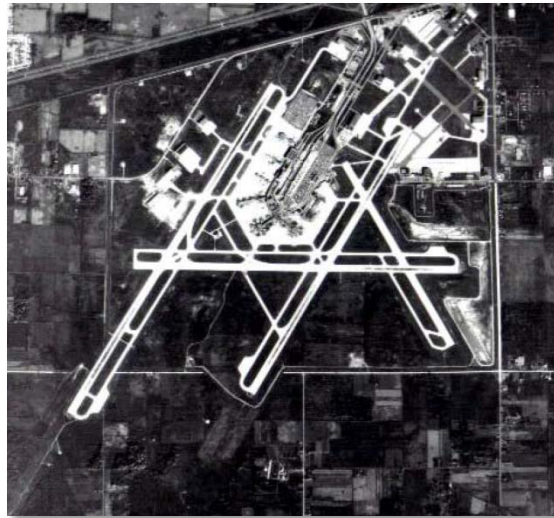
*Significant changes have occurred at the Airport over the past 50 years*

## 1950's - 1960's



Runway 4R-22L  
New control tower  
L.C. Smith Terminal  
Davey Terminal  
Airlines move from  
Willow Run

## 1970's



L.C. Smith Terminal  
expansion  
New Berry Int'l Terminal  
Republic Airlines hub  
3<sup>rd</sup> parallel runway  
(1976)

## 1980's



Republic merges with  
Northwest Airlines  
International traffic  
Master Plan (1986)

# Major Changes Since the 1990's



Northwest Airlines  
expansion and  
international service

Additional airfield capacity

South access roadway

McNamara Terminal  
(opened 2002)

North Terminal  
(opened 2008)

Northwest Airlines acquired  
by Delta Air Lines

# Master Plan Goals and Objectives

*Aligned with the Authority's strategic focus – customers satisfaction, financial competitiveness & stability, operational excellence, people, and regional development & growth*

- 1. Ensure safety and compliance with regulations**
- 2. Establish a long-term strategy while maintaining competitive costs**
- 3. Enhance the Airport's operation and facilities**
- 4. Address known deficiencies with regard to certain facilities**
- 5. Ensure high levels of service**
- 6. Position the Airport and region to capitalize on future opportunities**
- 7. Provide flexibility to adapt to changing circumstances**

And, we are seeking your input . . .

# Community Advisory Committee

*Civic, corporate, and community leaders with a vested interest in the Airport's future*

## Community

Detroit Urban League, Detroit Regional Chamber, Detroit Economic Club, Michigan Economic Development Corp., Detroit Metro Convention & Visitors Bureau, Detroit Economic Growth Corporation

## Business

General Motors, Rock Ventures, LLC, DTE Energy, Business Leaders for Michigan

## University

University of Michigan, Wayne State University, Eastern Michigan University

## Government/ Policy

Wayne County Airport Authority Board, Wayne County Executive Office, U.S. House of Representatives, SEMCOG, Regional Transit Authority of Southeastern Michigan, The Center for Michigan



# Committee Role and Expectations

- **Serve as a sounding board**
- **Exchange information relative to your organization**
- **Provide ideas for consideration in the Master Plan**
- **Stay engaged in the planning process (i.e. attend all meetings or send substitute in your place)**
- **Encourage your broader network to participate (i.e. public meetings)**
- **Help build the Airport's future by sharing what you learn from Committee participation**

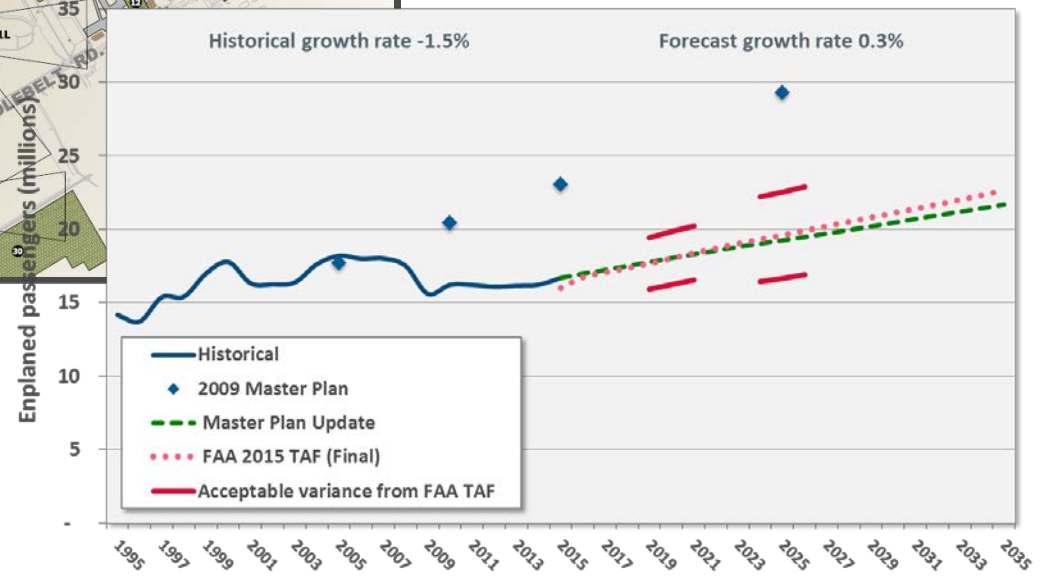
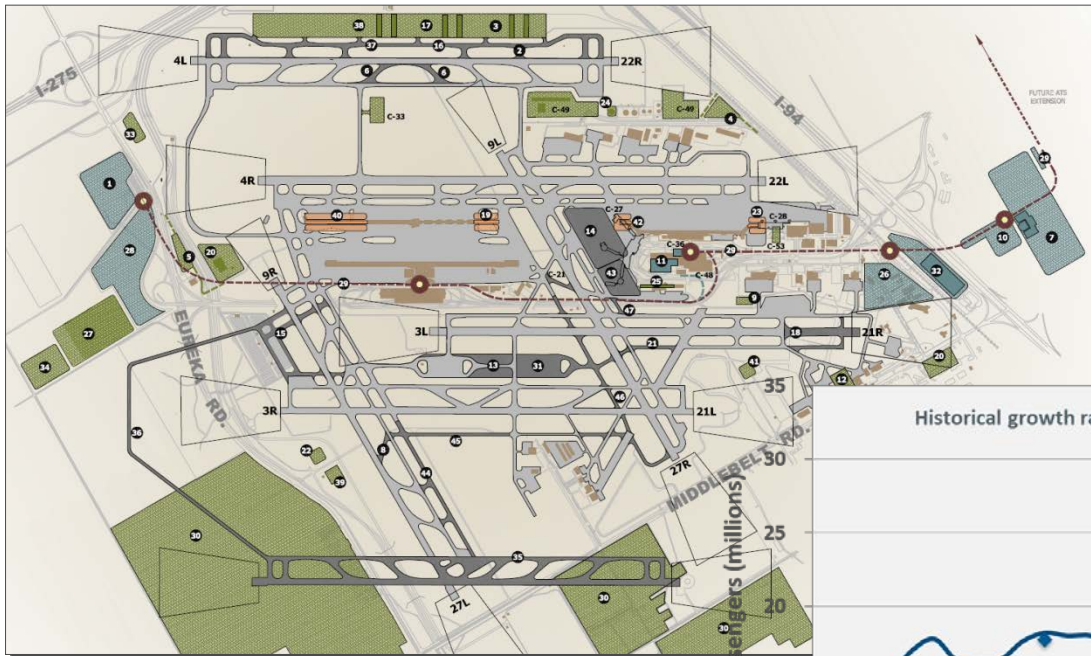


**Master Plan**



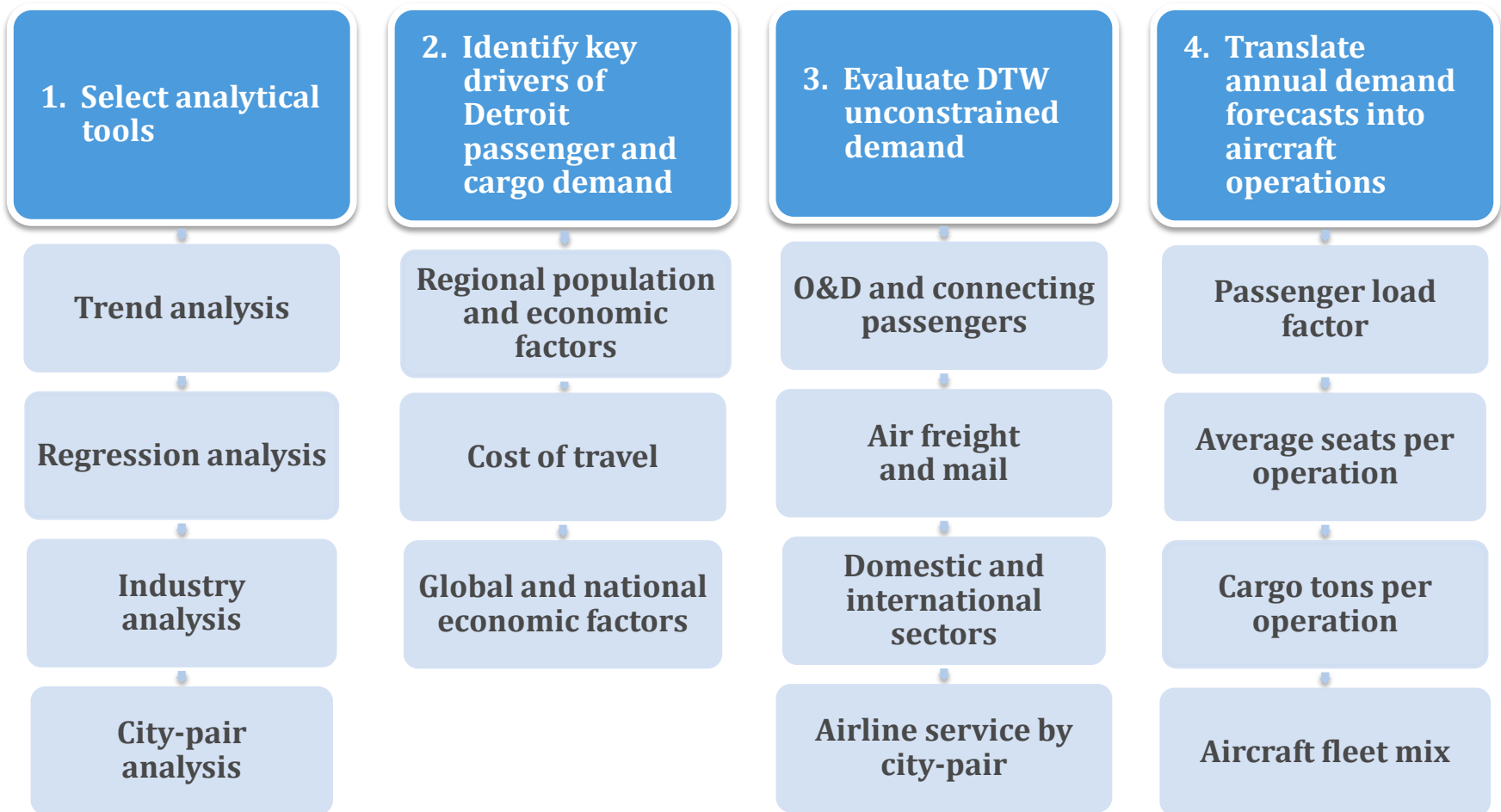
## *Key Findings to Date*

Different from the 2009 Ultimate Master Plan, a new runway will not be needed in the 20 year planning horizon



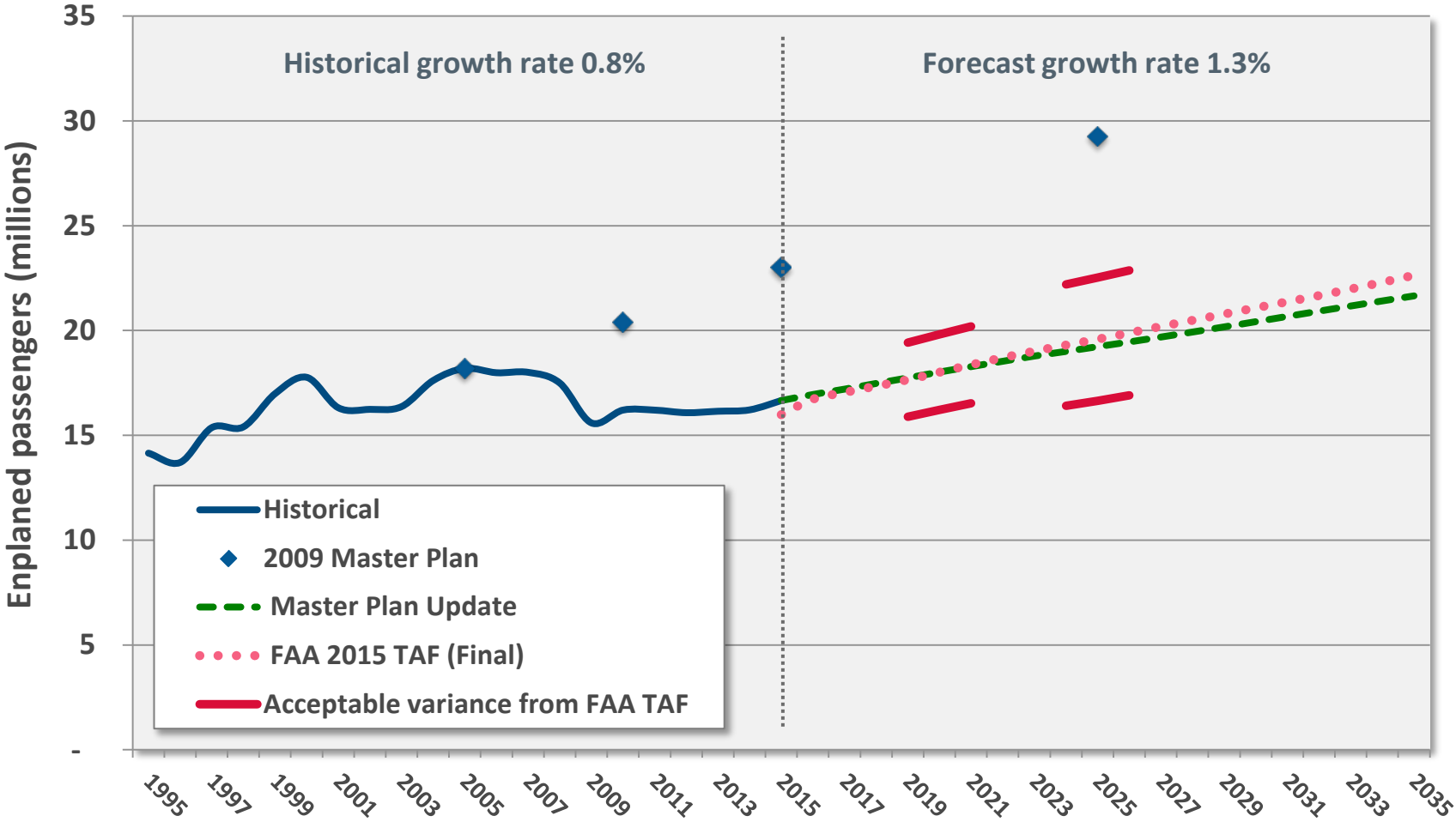
# Forecast Methodology and Approach

*The forecast approach incorporated a multi-tiered methodology to evaluate passenger and air cargo traffic in the Detroit Region*



# Forecast Passengers

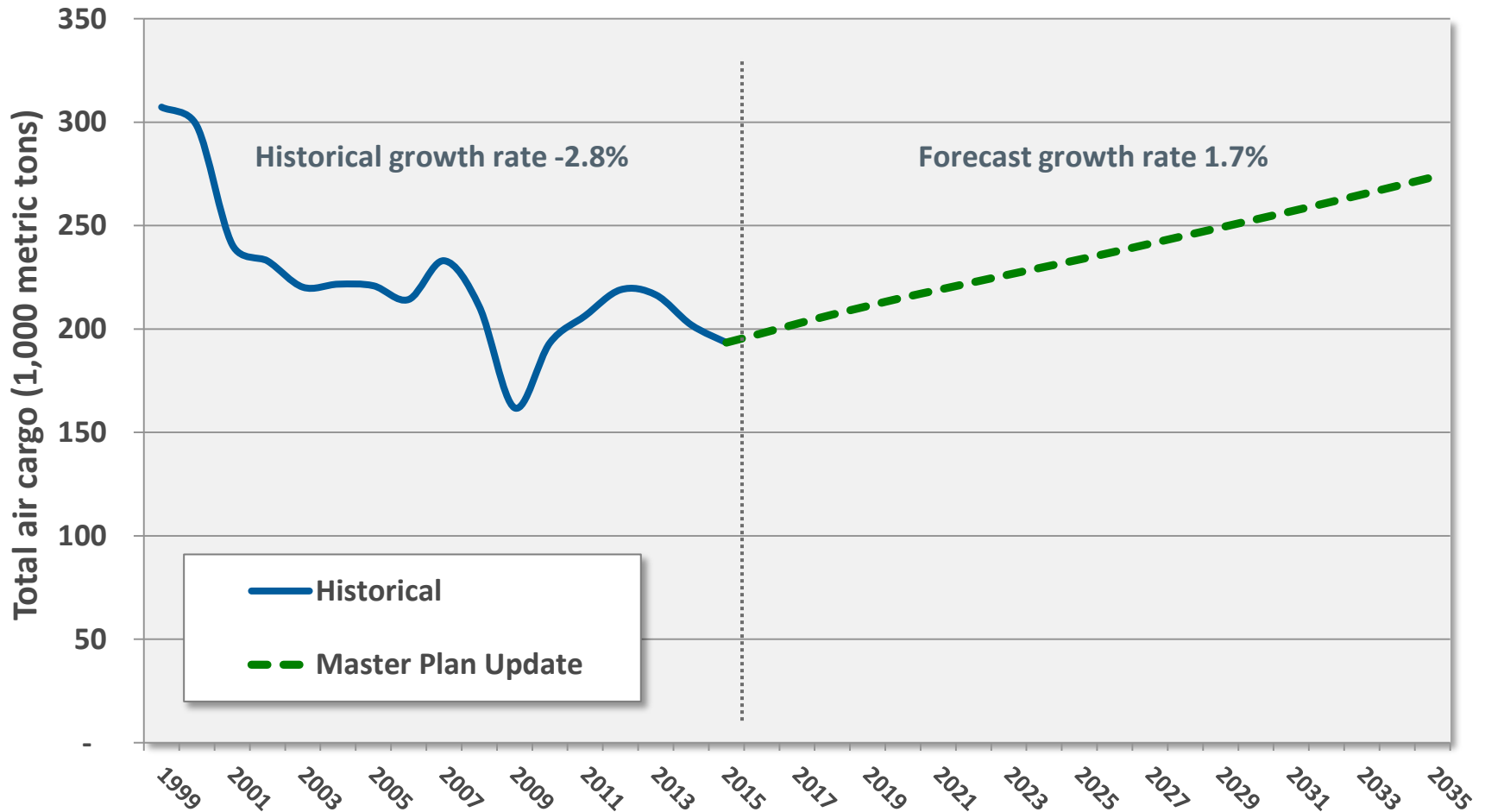
*Total passengers are forecast to increase an average of 1.3% per year between 2015 and 2035*



Forecasts are preliminary and subject to FAA approval.

# Forecast Air Cargo

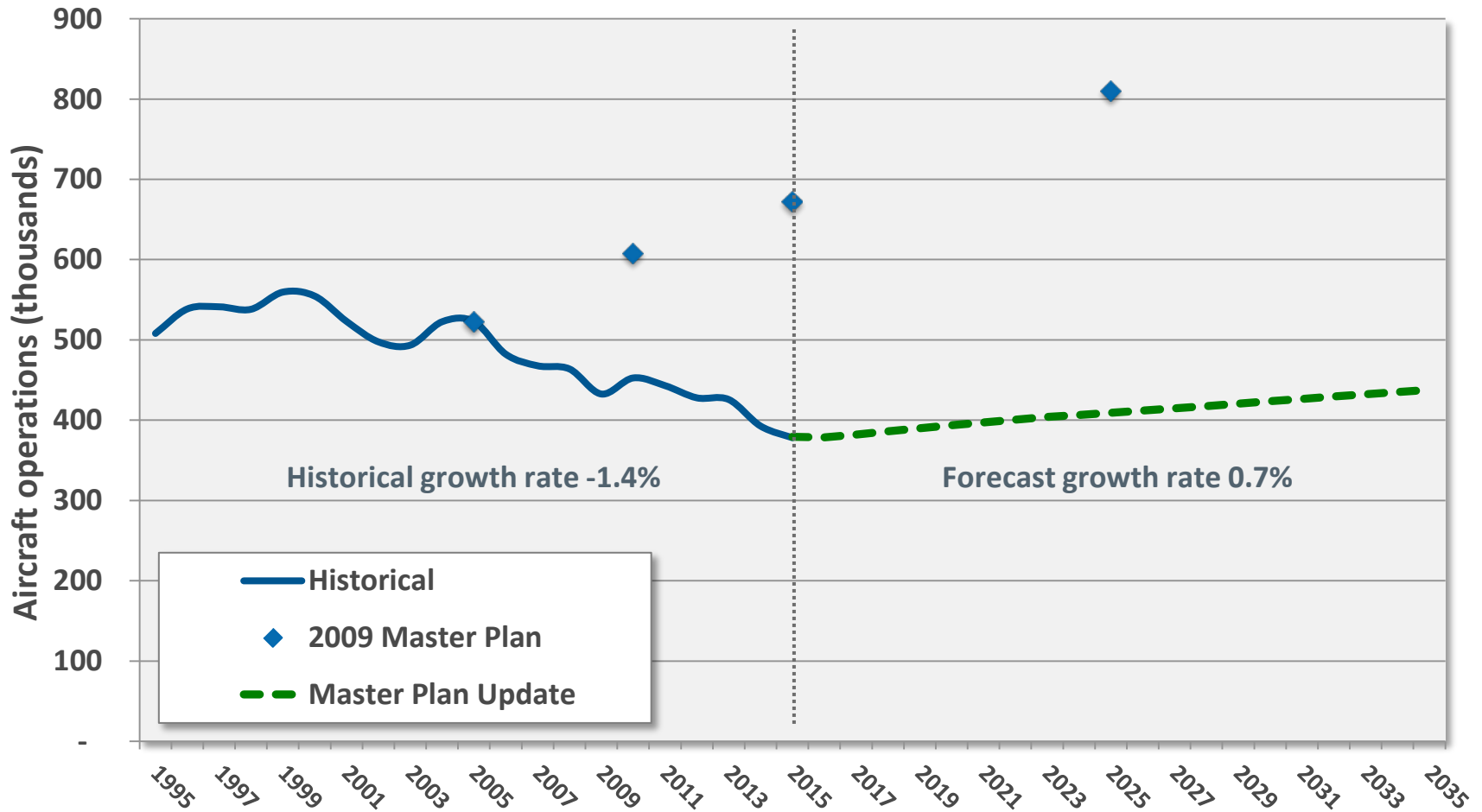
*Air cargo is forecast to increase an average of 1.7% per year between 2015 and 2035*



*Forecasts are preliminary and subject to FAA approval.*

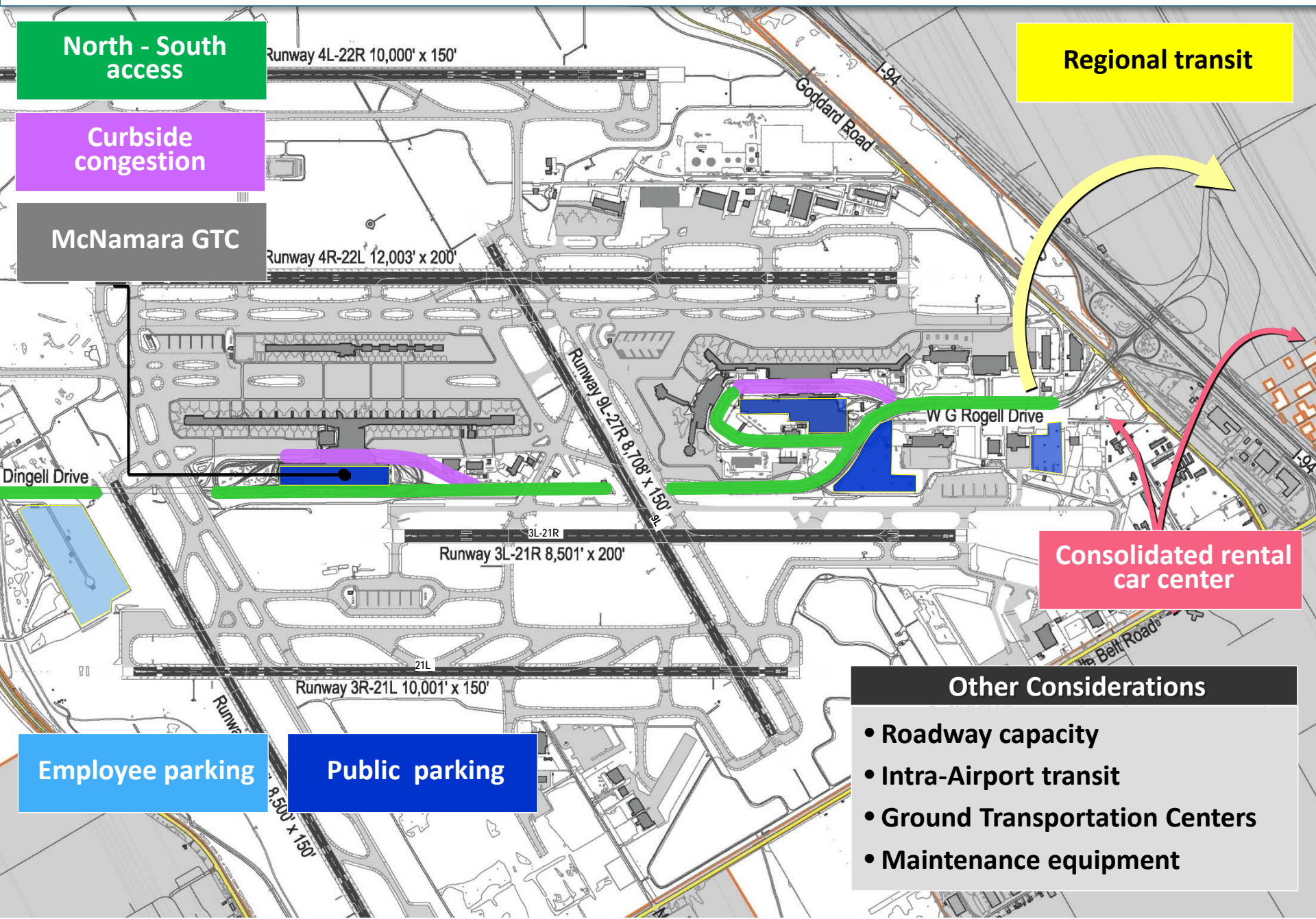
# Forecast Aircraft Operations

*Total aircraft operations are forecast to increase an average of 0.7% per year between 2015 and 2035*



Forecasts are preliminary and subject to FAA approval.

# Assessment of Existing Conditions: Airport Access and Parking



North - South access

Curbside congestion

McNamara GTC

Regional transit

Dingell Drive

Consolidated rental car center

- Other Considerations**
- Roadway capacity
  - Intra-Airport transit
  - Ground Transportation Centers
  - Maintenance equipment

Employee parking

Public parking



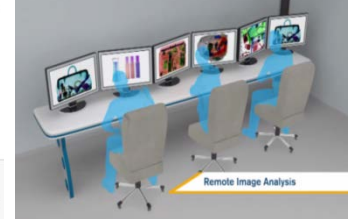
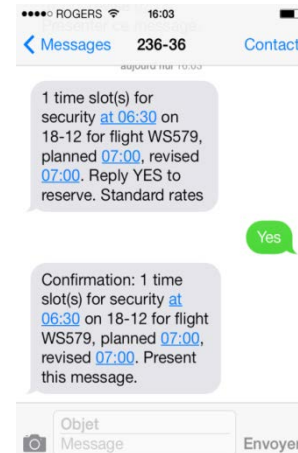
# Key Findings: General Assessment

The airport is in good condition, well maintained, and well positioned to accommodate future activity



# Key Findings to Date: Passenger Terminals

The passenger terminals provide sufficient capacity, although changes will be identified to enhance levels of service and the customer experience



# Key Findings to Date: Areas of Emphasis

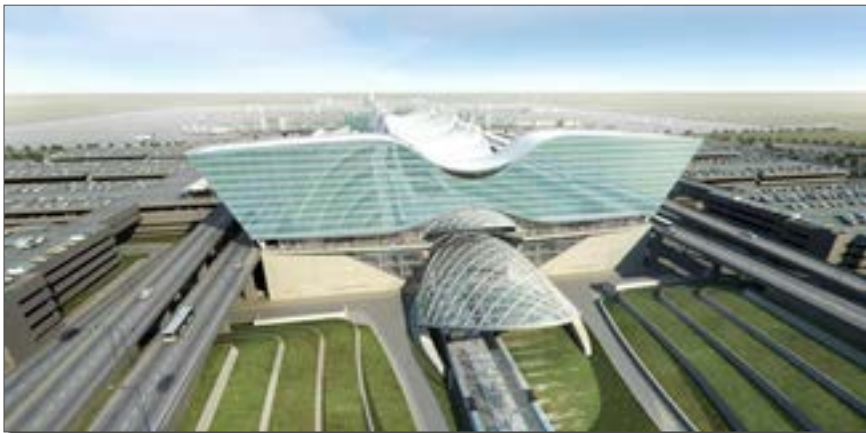
The Master Plan will provide opportunities to review commercial development



Munich Airport Centre – Commerce + Events



Schiphol Plaza – Commercial Mall



Denver Int. Airport – Hotel and “Transit” Center



Athens Int. Airport – Commercial corridor

# *Open Discussion*



# Please Provide Your Input

- **Why is your input important?**
- **How will your input be used?**



Economic Development

Airport Infrastructure

Customer Service

Other

*Next Steps*

# There are Numerous Opportunities for Input



# Project Website and Mobile App

[www.detroitmetroairportmasterplan.org](http://www.detroitmetroairportmasterplan.org)

**Detroit Metropolitan Wayne County Airport Master Plan Update**

Welcome

An airport Master Plan is a comprehensive study that identifies near-, medium-, and long-term plans for airport development. This Master Plan Update will provide the Wayne County Airport Authority and its stakeholders with a comprehensive, organized, and rational plan for developing airport facilities over the next 20-years. This Plan will allow the Authority to efficiently and effectively meet the demands for commercial passenger and air cargo service, as well as other aviation-related needs. Development of the Master Plan Update will include input from stakeholders who have an interest in the Airport's future, such as: Airport users, community groups, local businesses, government agencies, and the general public.

[View the Schedule](#)

View the Master Plan Update schedule, progress, and other facts

[Go!](#)

[Attend an Event](#)

View upcoming opportunities for involvement

[Go!](#)

[Documentation](#)

Download and review project materials

[Go!](#)

[Leave a Comment](#)

Ask a question or provide a comment

[Go!](#)

News and Updates

**Garage B Complete**

We are happy to announce that Garage B is now complete. We are moving along through these...

[Read More](#)

Subscribe for Updates

Receive news and updates from this web site

Name

Email \*

[Subscribe](#)

The screenshot displays the website's interface. At the top, there is a navigation bar with links for Home, Schedule, Events, Documentation, and Leave a Comment. Below this is a 'Contact Us' form with fields for First Name, Last Name, Email, Subject, and Message. To the right of the form is a 'Documentation' section with a list of Technical Memorandum Nos. 1 through 12, and a Technical Report. Below the documentation list are sections for 'Fact Sheets, Display Boards, and Presentations' and 'Media Galleries'. The footer contains copyright information for 2016 WCAA and social media icons for Facebook and Twitter.





# Upcoming Meetings and Topics for Discussion

*Dates are subject to change*

Target dates	Discussion topics
<b>April 6</b>	Project kick off; Airport Master Plan introduction; project progress and initial findings
<b>June 8</b>	Facilities needed to accommodate future demand; initial alternatives
<b>August 3</b>	Final alternatives
<b>October 5</b>	Recommended development plan and implementation strategies
<b>April 28</b> <b>September 8</b> <b>December 8</b>	Public meetings to present master plan findings

# Questions and Closing Remarks

